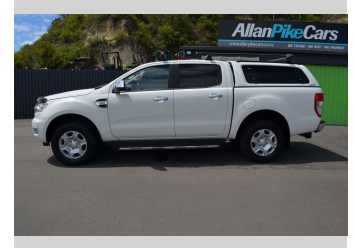



2016 Ford Ranger XLT DOUBLE CAB W/S A



Purchase Price **\$19,995**
Includes GST, Registration & Licensing

Finance may be available on this vehicle. Ask one of our friendly staff for more information.



Gain peace of mind with Mechanical Breakdown Insurance. **Ask us how.**

- Top features**
- » ABS Braking
 - » Air Conditioning
 - » Bluetooth Audio
 - » Bluetooth Phone Prep
 - » Central Locking
 - » Child seat anchor poin...
 - » Cruise Control
 - » NZ New
 - » Roof Rack
 - » Running Boards
 - » Tow Bar

Body Style
4 door, Ute

Odometer
211,000 km

Engine
3198 cc, Internal Combustion

Fuel Type
Diesel

Transmission
Automatic, 2WD

Wheels
Factory Alloys

VIN
MNAUMFF50GW544608

Interior
Grey, Cloth

Safety



Based on 2025 VSRR rating

Reg No.
JRJ822

Ext Colour
White

History
NZ New, 6 owners

Seats
5 seats, Cloth

CO2 Emissions
★ ★ ☆ ☆ ☆ ☆
257 grams/km

Energy Economy
★ ★ ☆ ☆ ☆ ☆

**Annual fuel cost of \$3,780
9.7L per 100km**

Cost per year is an estimate based on diesel price of \$2.00 per litre and an average distance of 14000 km. Includes Road User Charges (RUC). Emissions and Energy Economy figures standardised to 3P WLTP.

Stock ID: 1724



Allan Pike Cars | Phone 06 835 7072 | Email sales@allanpikecars.co.nz
Napier, New Zealand
www.allanpikecars.co.nz

