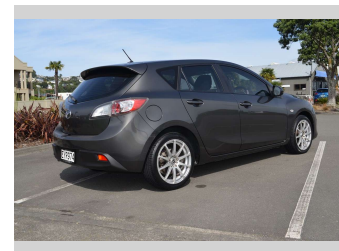
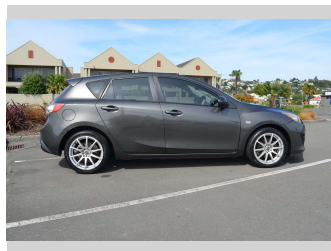



2009 Mazda Mazda3 Hatch GLX 2.0



Purchase Price **\$5,995**
Includes GST, Registration & Licensing

Finance may be available on this vehicle. Ask one of our friendly staff for more information.



Gain peace of mind with Mechanical Breakdown Insurance. **Ask us how.**

Top features
None Listed

Body Style
5 door, Hatchback

Odometer
226,000 km

Engine
1999 cc, Internal Combustion


Fuel Type
Petrol

Transmission
Automatic, Front Wheel

Wheels
-

VIN
JM0BL10F100102326

Interior
-

Safety

Based on 2024 UCSR rating for 09-13 models

Reg No.
EYR974

Ext Colour
Grey

History
NZ New, 5 owners

Seats
5 seats

CO2 Emissions
★ ★ ★ ☆ ☆ ☆
219 grams/km


Energy Economy
★ ☆ ☆ ☆ ☆ ☆
Annual fuel cost of \$3,570
9.1L per 100km

Cost per year is an estimate based on petrol price of \$2.80 per litre and an average distance of 14000 km. Emissions and Energy Economy figures standardised to 3P WLTP.

Stock ID: 1671



Allan Pike Cars | Phone 06 835 7072 | Email sales@allanpikecars.co.nz
Napier, New Zealand
www.allanpikecars.co.nz



★ ★ ★ ★ ★
4.87 | 224 reviews